



Digimap[®]

Image © 2006 JupiterImages Corporation



Marine Digimap

Explore Great Britain's marine and coastal landscapes with our maps and data. Annotate, print or integrate the data into GIS and CAD applications. We provide extensive online support for a seamless experience. Join us in this academic adventure.

Available data includes:

- Detailed vector digital marine mapping data
- Geocoded scanned UK Admiralty Charts at various scales
- Bathymetry data



Scan to find out more about our Collections

Marine Digimap: Your Gateway to Ocean Mapping

Marine Digimap offers an online platform providing digital map data sourced from OceanWise. Our user-friendly applications are designed with intuitiveness and flexibility in mind, tailored specifically for academic use.

Key Features

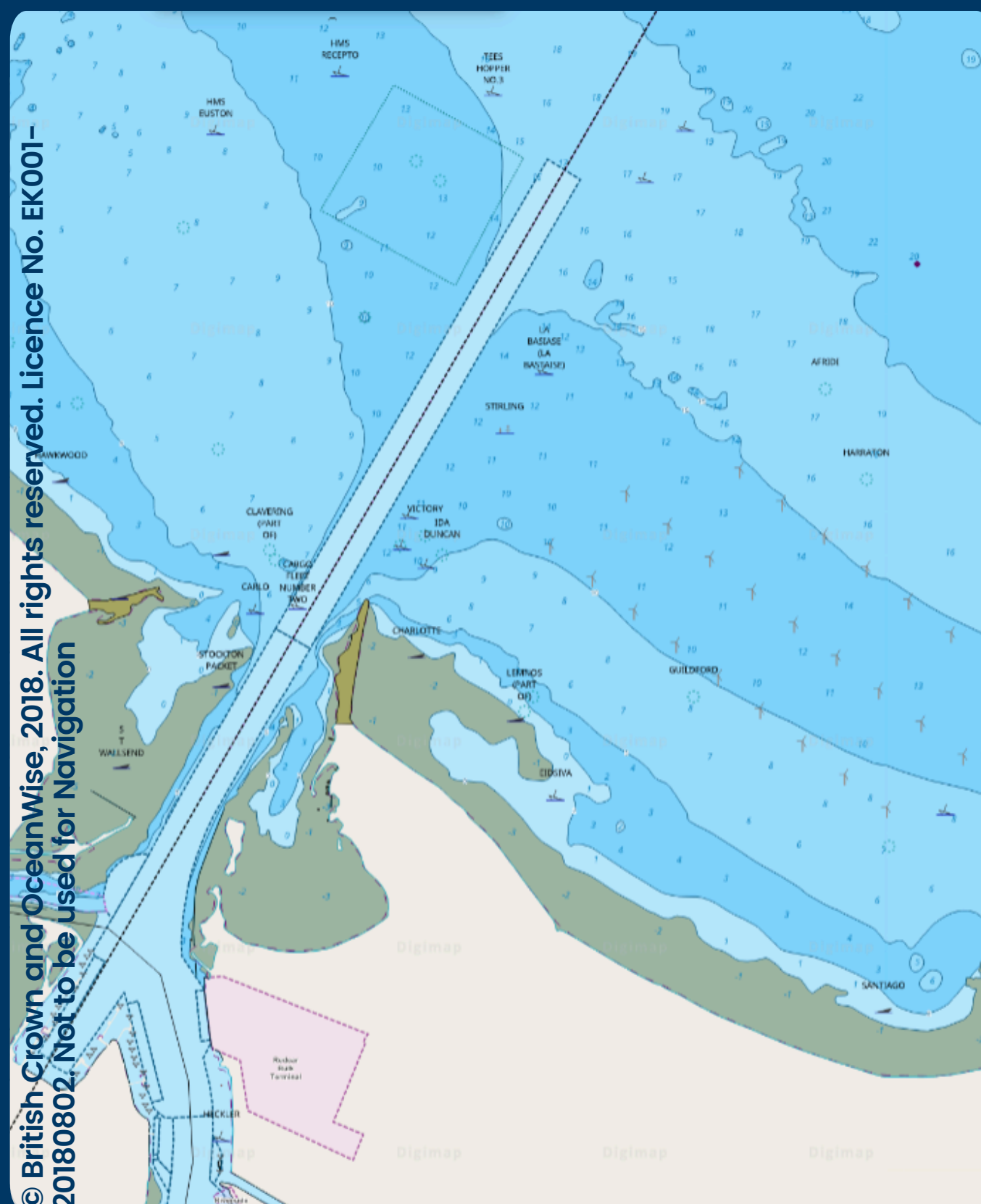
Mapping Tool

- View, annotate, print maps. Download data for further analysis in GIS or CAD software.

Map Data Highlights:

- Marine Themes Vector: authoritative marine mapping data covering bathymetry, obstructions, offshore and navigational features, transportation, climate, tides, and more.
- Raster Charts: georeferenced images of Admiralty Charts for reference and backdrop mapping.
- Bathymetry: detailed vector data for analysing sea floor depths and constructing 3D ocean floor models.

Experience the depth of marine mapping with Marine Digimap. Dive in today!



Digimap Support

Help at Hand: Comprehensive assistance via Digimap applications.

Learn with Us: Regular webinars for all users.

We're Here: Dedicated helpdesk support

Contact Us: Any queries? Email us at digimap@ed.ac.uk.

Discover More: Visit <https://digimap.edina.ac.uk/> for subscription details, data availability and user guides

Stay Connected

 https://twitter.com/EDINA_Digimap

 <https://www.facebook.com/EDINADigimap>

 <https://www.youtube.com/user/EDINADigimap>



OceanWise provides detailed marine mapping data and intelligent, high-quality geographic information for the marine environment and coastal zone.



EDINA is a centre for digital expertise and online service delivery at the University of Edinburgh.