

# Marine and Coastal Mapping data from OceanWise Ltd

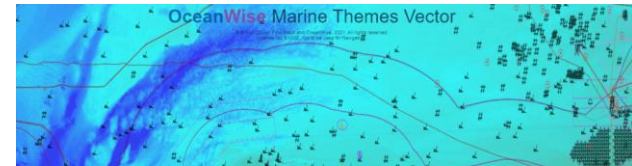
Andrew Bell – Information Systems Manager

# Content

- **Who** are OceanWise?
- **Why** marine mapping is important
- **What** marine maps are available through Digimap?
- Case Studies
- Marine facts

# OceanWise

- UK-based SME with global reach.
- A leading supplier of **marine mapping** products and services to governments, ports and offshore energy for GIS and online maps.
- **Monitoring** systems for real-time and historic tidal, meteorological and wave data to ports and offshore services.
- **Compliance:** Data Management training, asset management and enterprise solutions to the marine and maritime sectors.



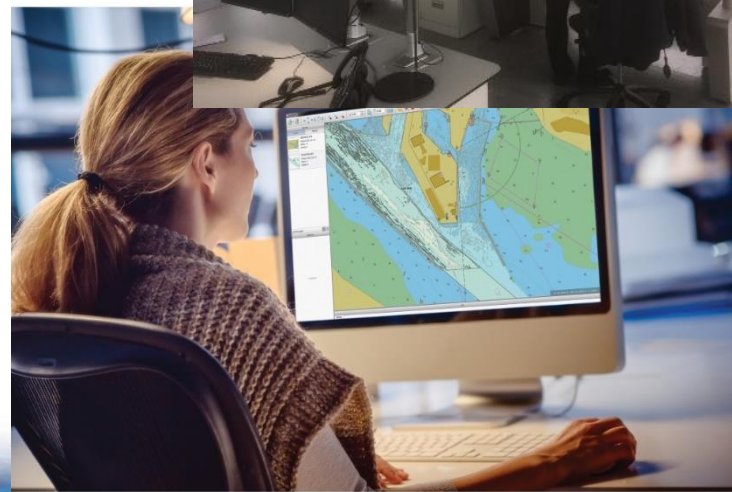


“Covering 71% of the Earth’s surface, we believe that the marine and coastal domain should not have to fall behind its terrestrial counterpart when it comes to having fit-for-purpose digital base mapping”



# Marine mapping development

- We are the leading provider of Marine Maps worldwide
- OceanWise personnel have been the pioneering force in developing and improving the availability of marine data.
- We are members of all the leading geospatial governing boards as well as the UN GGIM (United Nations working group for marine data).



# Delivering better maps

We work with national Hydrographic Offices adding value to their data to create the best possible solutions for the customer.

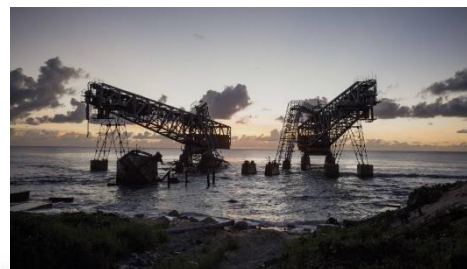
As marine mapping has developed, the emphasis today is on delivering fit for purpose maps that can be used and manipulated in our increasingly digitalized world.

We believe that the creation of 'intelligent' marine mapping is key and deliver maps that are authoritative, flexible, compatible and easily integrated.



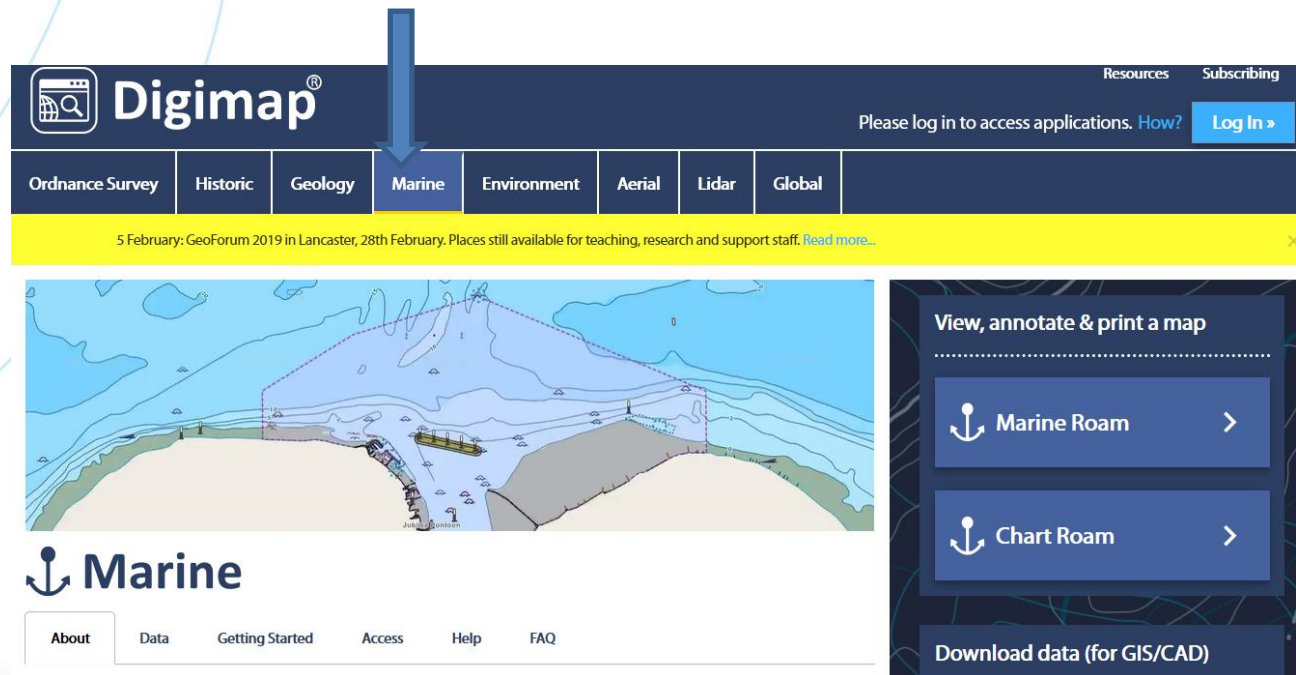
# Who uses marine mapping?

Government & Agencies  
Marine Security & Communication  
Offshore Energy & Telecoms  
Environmental & Coastal Protection  
Marine Science & Discovery  
Fisheries & Aquaculture  
Education & Academic institutions  
Insurance  
Commercial Waste Disposal  
Commercial Mineral & Marine Asset Extraction  
Environmental & Coastal Monitoring  
Marine Accident and Investigation  
Marine Transportation / Ports and Harbours



# Marine maps via Digimap

**‘Marine’**  
Marine and Coastal  
Mapping Data

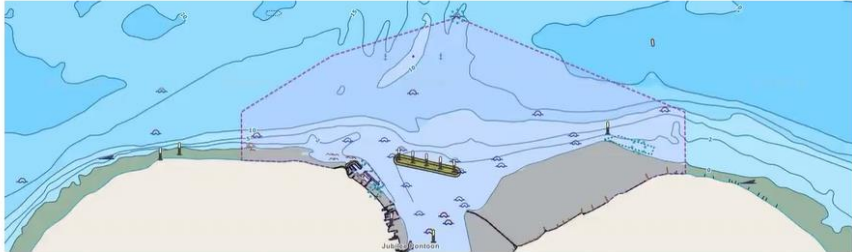


**Digimap®** Resources Subscribing

Please log in to access applications. [How?](#) [Log In »](#)

Ordance Survey Historic Geology **Marine** Environment Aerial Lidar Global

5 February: GeoForum 2019 in Lancaster, 28th February. Places still available for teaching, research and support staff. [Read more...](#)



**Marine**

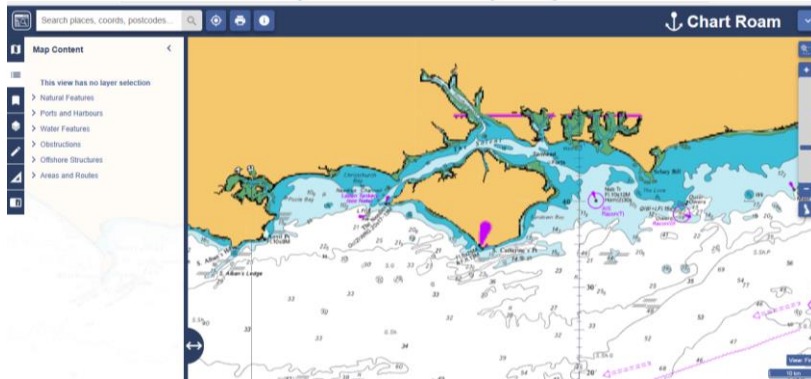
About Data Getting Started Access Help FAQ

**View, annotate & print a map**

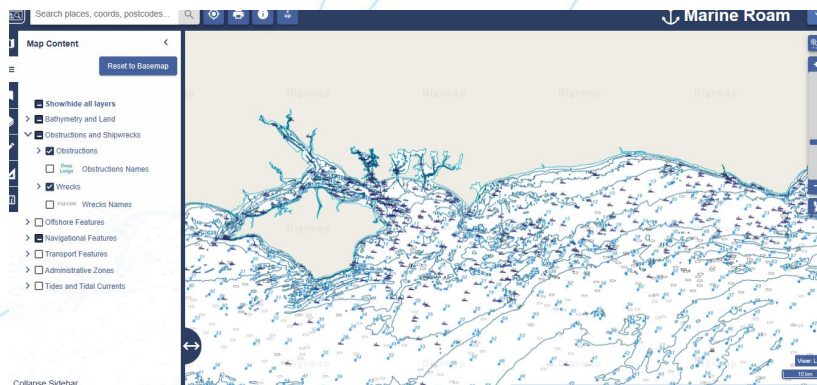
- [Marine Roam](#)
- [Chart Roam](#)
- [Download data \(for GIS/CAD\)](#)



# 2 Key Options

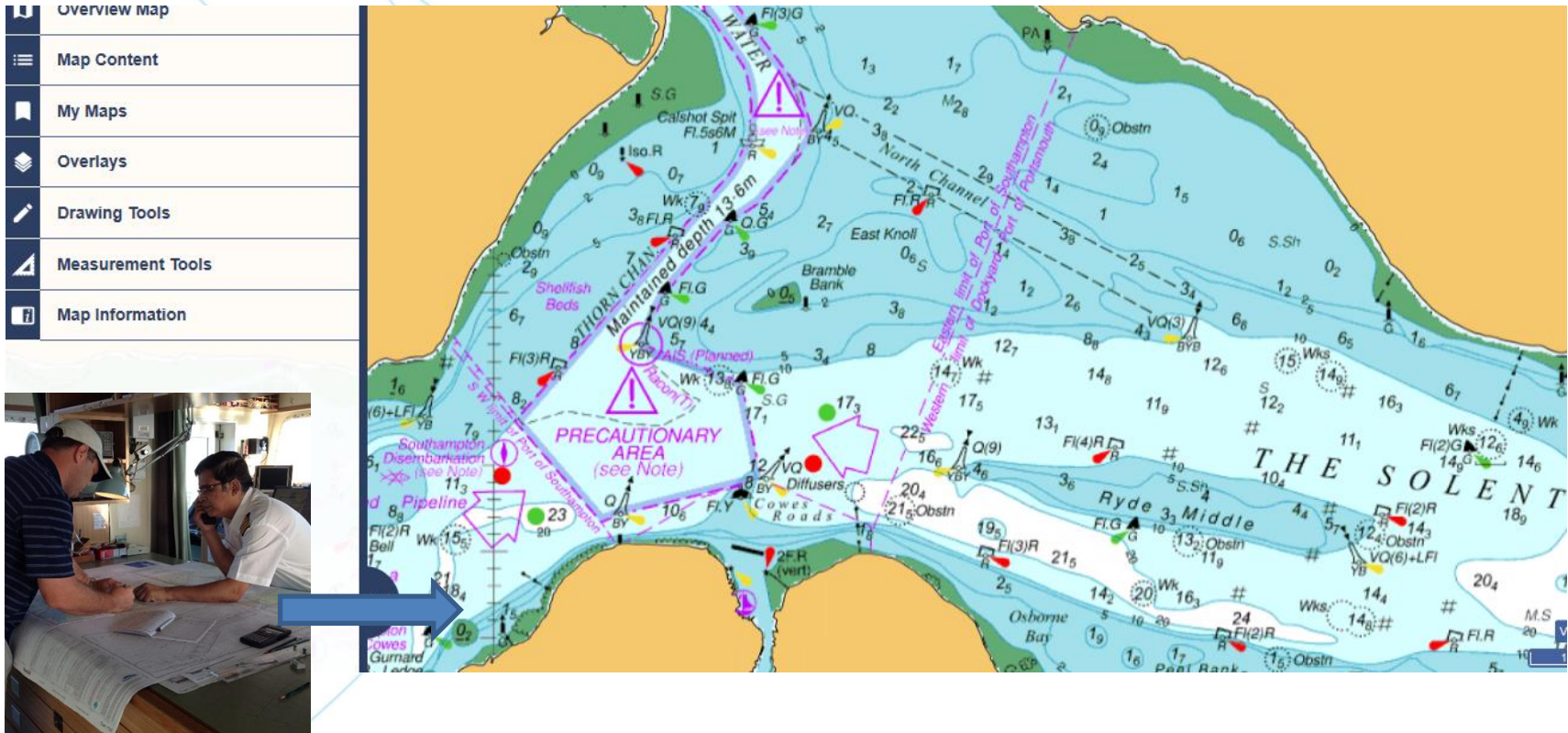


- **Chart Roam**  
Basic background map



- **Marine Roam**  
Rich Vector Dataset with layers which can be turned on/off

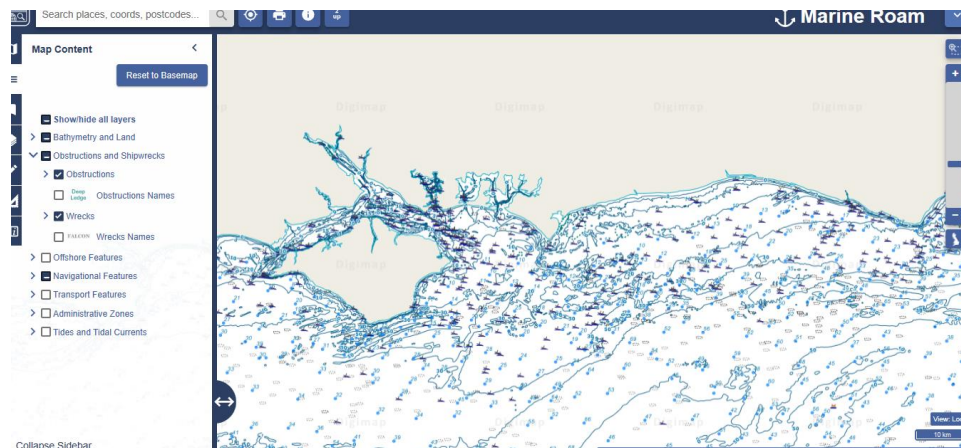
# Chart Roam = Raster Charts



- Digital version of the nautical paper charts used by mariners for navigation
- Basic background or base map

# Marine Roam = 'Marine Themes Vector'

- Much more than a chart!
- Rich Dataset – customise your view to your own requirements
- Turn layers and features on and off to create your own map
- Ideal for analysis, planning
- Explore and investigate





# Marine Roam Layers

Shipwrecks & Obstructions



Industrial Features



Transport / Navigational Features



Tides & Currents



Bathymetry & Land



Admin Zones



Digimap delivers the same high quality marine data used by professionals in the UK and all over the world

The background features several thin, light blue concentric arcs on the left side, resembling a stylized wave or a series of overlapping circles. At the bottom of the slide, there is a horizontal band of dark blue water with glowing, ethereal blue light patterns, possibly representing bioluminescence or a digital data visualization.

# Case Studies

Customer  
Case Study

## OceanWise Data supports the new Welsh Government Marine Plan



“The Welsh Government is required, as part of its Marine Plan, to present accurate marine mapping data that is available and understandable to anyone who needs it. **OceanWise** has worked closely with us to develop this service.”

*Phil Coates - Marine Plan Implementation  
and Evidence Manager, Welsh Government.*

[Wales Marine Planning Portal \(gov.wales\)](https://gov.wales)





# VATTENFALL



“We have incorporated the **OceanWise** Raster Charts XL (Chart Roam) service into our organisational WebGIS. This gives our developers, engineers and other project staff a good overview of many of the key marine features that are relevant for wind farm development. As we take the service to cover a large geographical area we also use the service to gain a quick view on areas of potential market development growth in addition to our current portfolio”

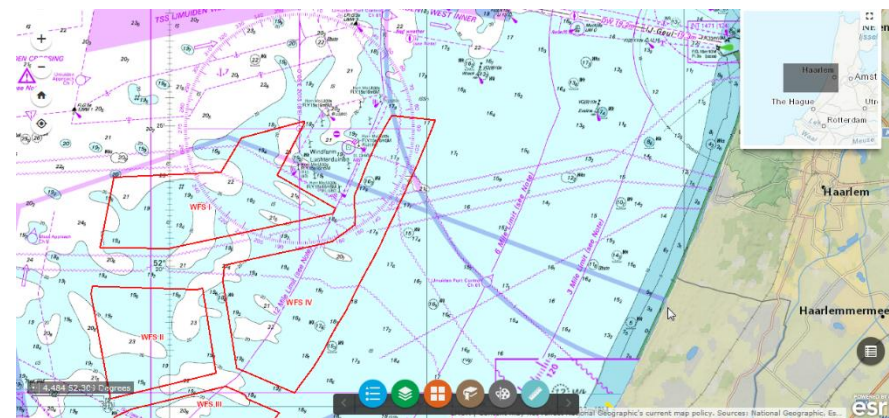


Image: Raster Chart XL being used in Vattenfall's WebGIS

Anthony Hunt, Head of GIS, BA Wind, Vattenfall

# A few marine stats

- Maritime productivity, turnover and employment increased over last 5 years despite Covid.
- Our oceans are national assets worth an estimated 1,200 billion Euros globally – governments are looking to the seas to bolster economy (including UK)
- Less than 20 percent of the ocean floor has been mapped—13 percent in just the past four year. Scientists trying to map it all by 2030
- The 'white ribbon' is term to describe region spanning the land-sea interface. There is a lack of data for this region; too shallow for most bathymetric survey methods and too deep for land-based surveys. This inter-tidal and nearshore region is, however, of crucial importance to coastal engineers and managers.
- We simply don't know enough yet about our oceans = continued research and development opportunities



The world is your ocean!

# Why is the academic sector important to us?

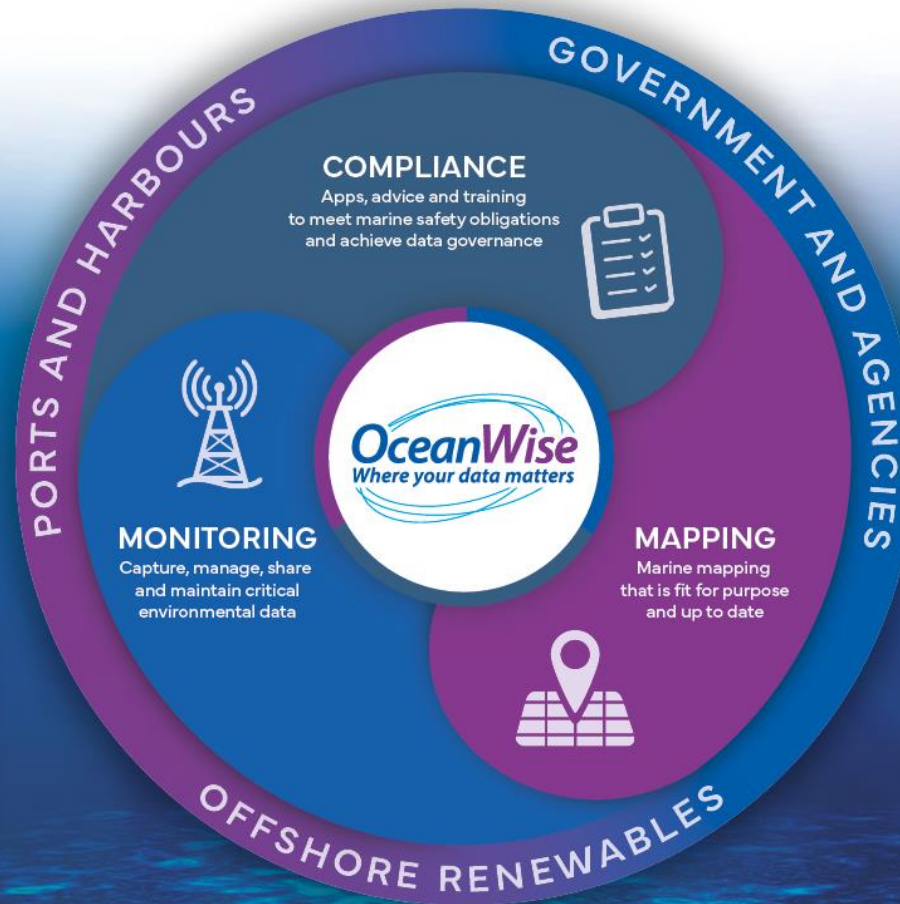
- We want students to use the best data available
- We understand that research and development requires the best possible mapping and latest data
- You will see consistency with what is being used in industry, government and regulators (I.E MMO, Welsch Marine Portal, Marine Scotland)

**Fresh minds ask questions, push development and innovation...we are listening and are open to your ideas**

**We are  
listening**







Independent • Experienced • Innovative • International • Trusted

[www.oceanwise.eu](http://www.oceanwise.eu) / [@oceanwise\\_eu](https://twitter.com/oceanwise_eu)