



# Making use of Verisk data for your projects

**Jeremy Thomas and Tom Timms**

08/11/2024

# Who are Verisk?

- World leading Insurance Services provider
- \$3bn annual revenue, NASDAQ listed
- Global presence
- Acquired The GeoInformation Group in 2016
  - Cambridge based
  - Geospatial datasets derived from aerial imagery

## Our values



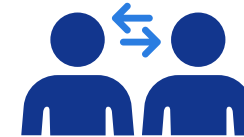
### Learning

Open, Curious,  
Inventive



### Results

Achievement-driven,  
Goal-focused,  
Resilient



### Caring

Aware, Sincere, Connected

# Who do we help?





# Our products available on Digimap

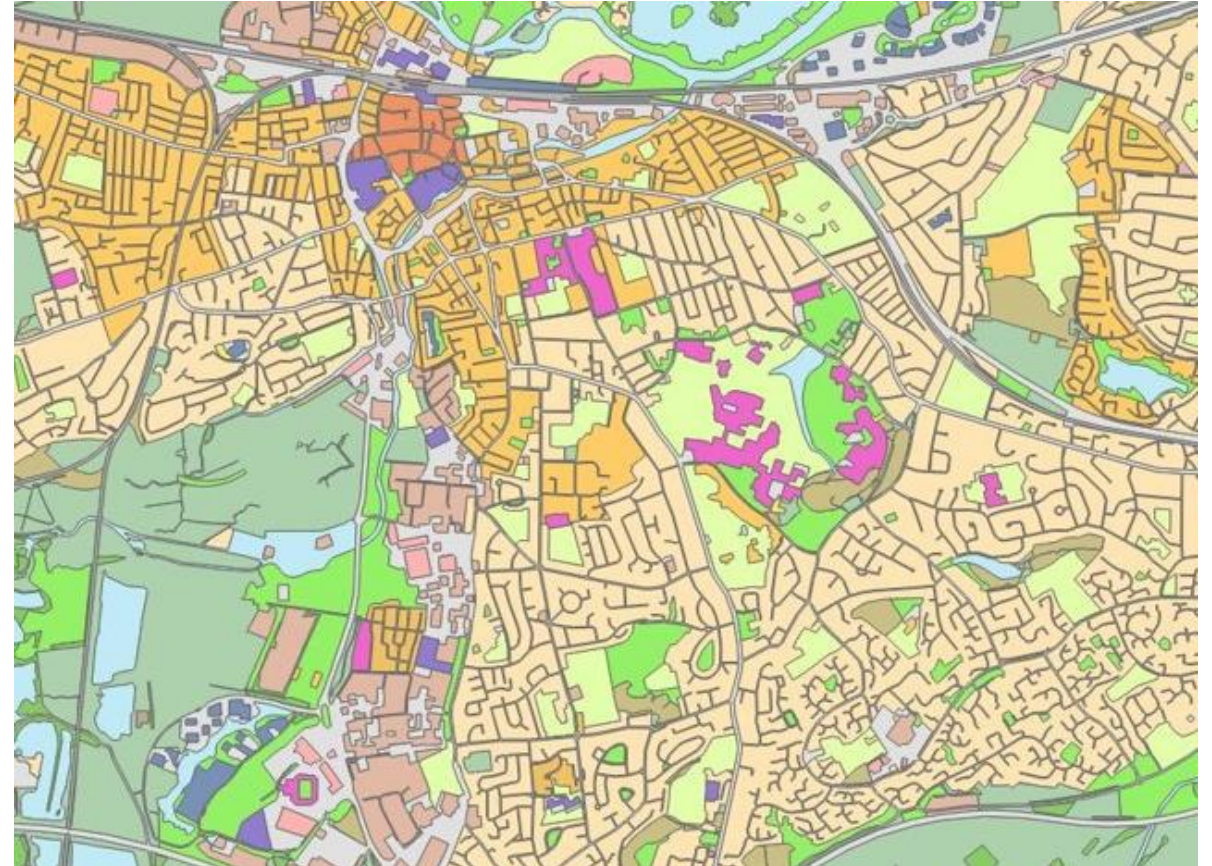




# UKLand

## National small-scale land-use database

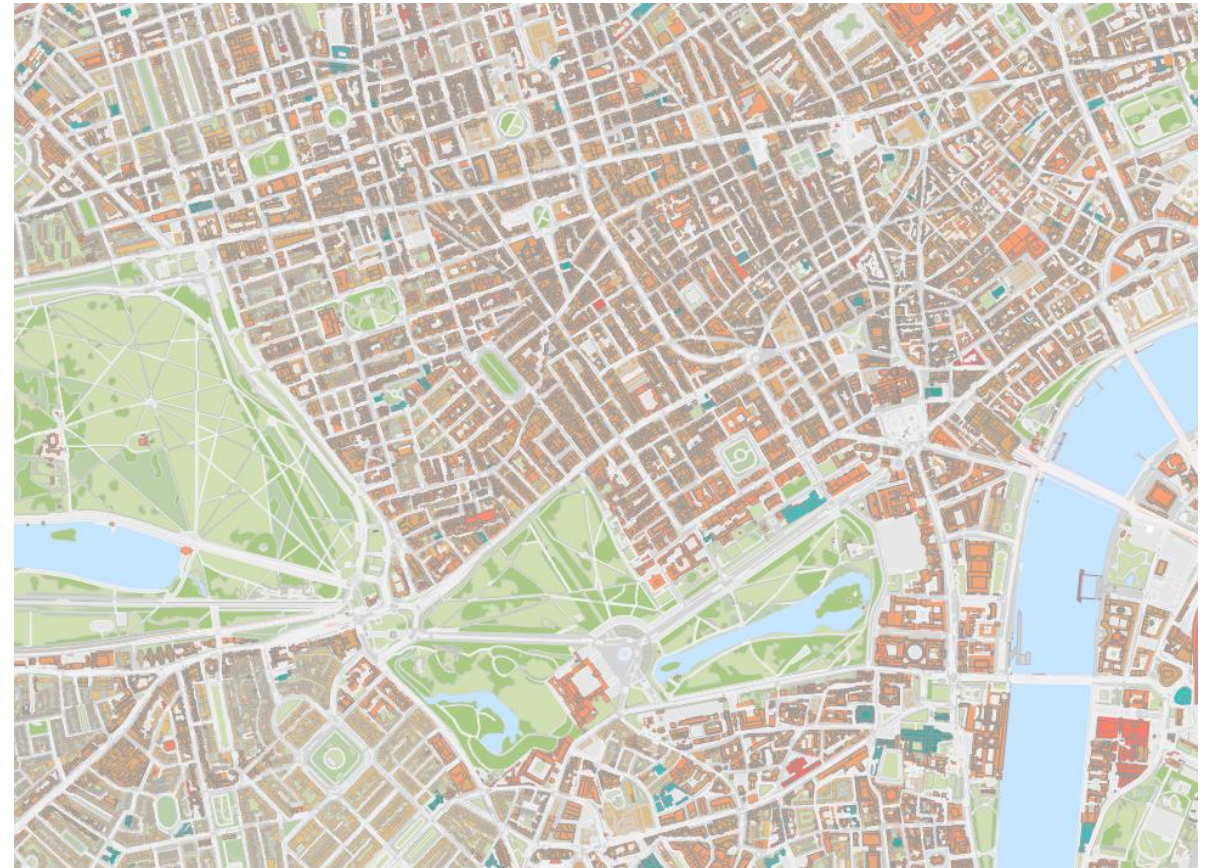
- UK coverage
  - England, Scotland, Wales, N Ireland
- 27 classes
  - Natural (Agriculture, Woodland, Water ....)
  - Urban (Industrial, Commercial, Suburban ...)
- Uses include
  - Site search & assessment
  - Regional planning and comparison
  - Utility network roll-out



# UKMap

## Detailed topographic database of Greater London (Not maintained)

- Greater London (to M25)
  - Topography
  - Land-use (200+ classes)
  - Land-cover
  - Retail
- Uses include
  - Planning and site assessment
  - Transport planning
  - Incident response
    - Pavement widths
    - Residential above retail





# UKBuildings

## National property database

- A database of property characteristics
  - Coverage of England, Scotland and Wales
  - 46 Property attributes



# Key attributes within our property data



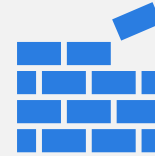
## Age and historic data

- Age
- Year built (where known)
- Confidence
- Listed grade



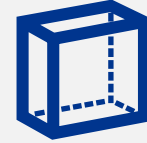
## Dimensions

- Height
- Premise area
- Building area
- Address area
- Gross area
- Distance from nearest building
- Distance from water



## Structural information

- Roof type
- Wall type
- Substructure type
- Glazing
- Wall construction
- Floor type
- Element count



## Use and type

- Premise use
- Premise type
- Bungalow
- Flat conversion



# Key attributes within our property data



## Site information:

- ID
- Area
- Non-built area
- Building count



## Room, floors and feature counts – number of:

- Floors
- Bathrooms
- Bedrooms
- Reception rooms
- Extensions
- Habitable rooms
- Presence of a basement
- Open fireplaces



## Standard identifiers for easy integration:

- Verisk premise ID
- Verisk building ID
- UPRN
- UPRN count
- UPRN distance
- TOID



## Map display characteristics:

- Map age
- Map floors
- Map use
- Map simple use

# UKBuildings

## National property database

- A database of property characteristics
  - Coverage of England, Scotland and Wales
  - 46 Property attributes
- Uses include:-
  - Insurance underwriting
  - Supporting future energy demand models
  - Assessing retrofit suitability
  - Catastrophic event risk assessment
  - Telecoms infrastructure planning

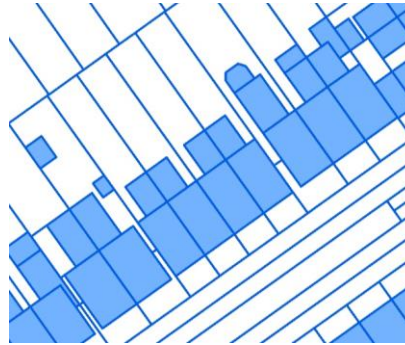


# UKBuildings Terminology

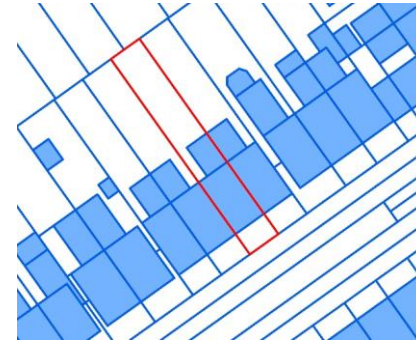
Aerial view



Map



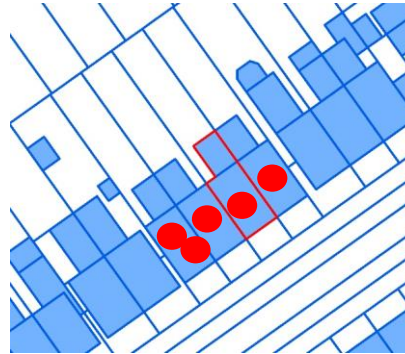
Site



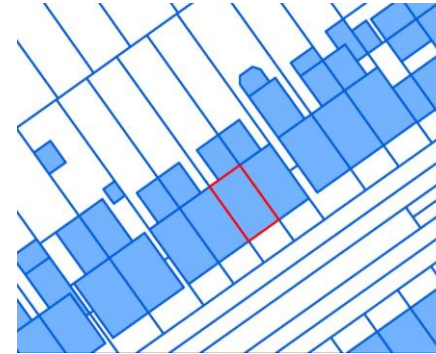
Building



Premise



Element



Addresses  
(UPRN)



# How did we capture UKBuildings data?

- Manual classification of buildings from aerial imagery
  - All urban areas completed in 2019
- Additional sources to deliver national coverage
  - Land-Registry
  - Energy Performance Certificates
  - Planning applications
  - Historic mapping
  - Analytics to fill gaps



# Ordnance Survey NGD Buildings & UKBuildings

- New Ordnance Survey product
  - High spatial accuracy
  - Detailed attribution and integration with other NGD themes
  - Includes Verisk attributes for Basements, Wall Type and Age
- UKBuildings advantages
  - Additional attributes
    - Room counts
    - Energy Performance information
    - ....
  - Ease of use

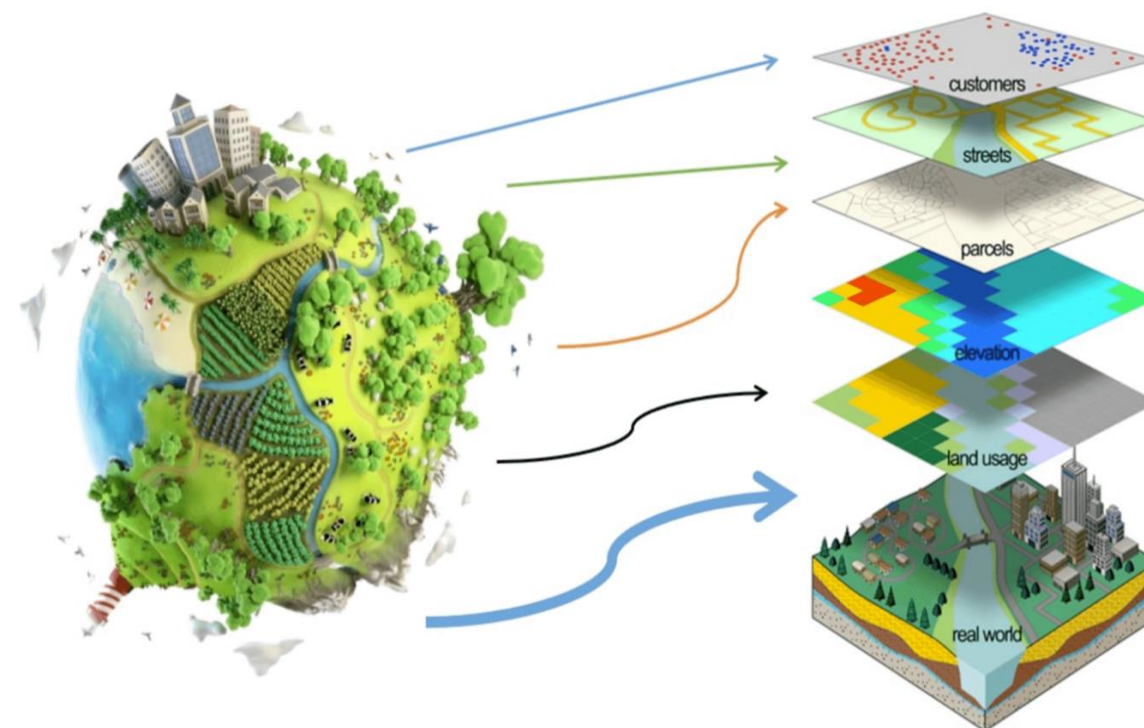




# How can we help you?

## What sort of projects are you working on?

- Geospatial comparisons across areas?
- Access to Greenspace?
- Homes suitable for energy saving measures?
- Flooding assessments?
- Climate change impacts?
- Health inequality?





# Why use Verisk data in DigiMap?

## Multiple benefits

- Ease of use
  - analysis ready
  - easy integration with other data
- National scale, complete, consistent data
  - Small scale land use
  - Property characteristics
- Use data that is addressing key challenges
- Use the same data & techniques used by industry and research orgs





Find out more:-

<https://digimap.edina.ac.uk/verisk>

Standard legal language is pending. Until the template is updated with standard boilerplate, please insert the appropriate legal language for your business area.

©Verisk Analytics, Inc. All rights reserved.





# Demo

Standard legal language is pending. Until the template is updated with standard boilerplate, please insert the appropriate legal language for your business area.





# Questions

Standard legal language is pending. Until the template is updated with standard boilerplate, please insert the appropriate legal language for your business area.